

NEW FEATURES AND CHANGES IN AG-NAV NAVVIEWW Version 5.x

Version 5.0:

- 1) Digitize map for towers
- 2) Save towers to AGNAV.PUP
- 3) Copy ENTRY.NEW, AGNAV.* to floppy disk or USB memory stick
- 4) Plot XCountry waypoints from AGNAV.WPT file.
- 5) Digitize map for XCountry waypoints
- 6) Save XCountry waypoints to AGNAV.WPT
- 7) Save digitized waypoints to ENTRY.NEW
- 8) Display MicronAir flow data in Output2
- 9) Fix problem in converting spray data to SHP. The problem happens in SHX file
- 10) Support displaying spray data from multi booms sections.
- 11) Proper spray side is shown
- 12) Fix problem when creating a new project from NO1 files

Version 5.1:

- 13) Plot points on SHP file map with solid triangles.
- 14) Support SHP type 8, multipoint.
- 15) Show Average XTrack Error on Output1.

Version 5.2:

- 16) Add new feature to create a spray report.

CREATE SPRAY REPORT IN NAVVIEWW

NavviewW version 5.2 was developed especially to create a report of spray data. To create a report, do the following:

- 1) Open Area: Click the second button on the Tool bar.

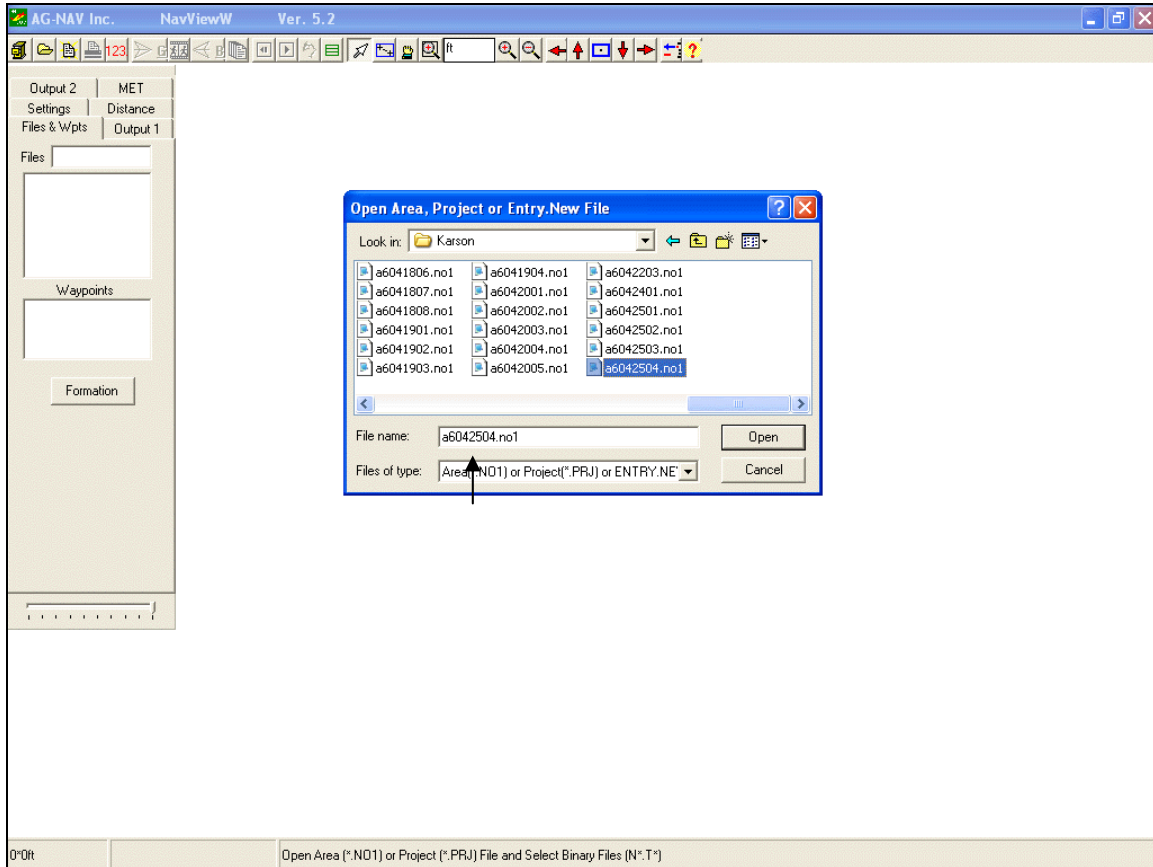


Figure 1: Select A Spray Area

A list of area *.NO1 and project *.PRJ files is shown. Select the desired area from the list. If the area file is in another folder, select the folder then select the area.

- 2) Select Spray or Flight Data Files: NavviewW prompts you to select flight data files.

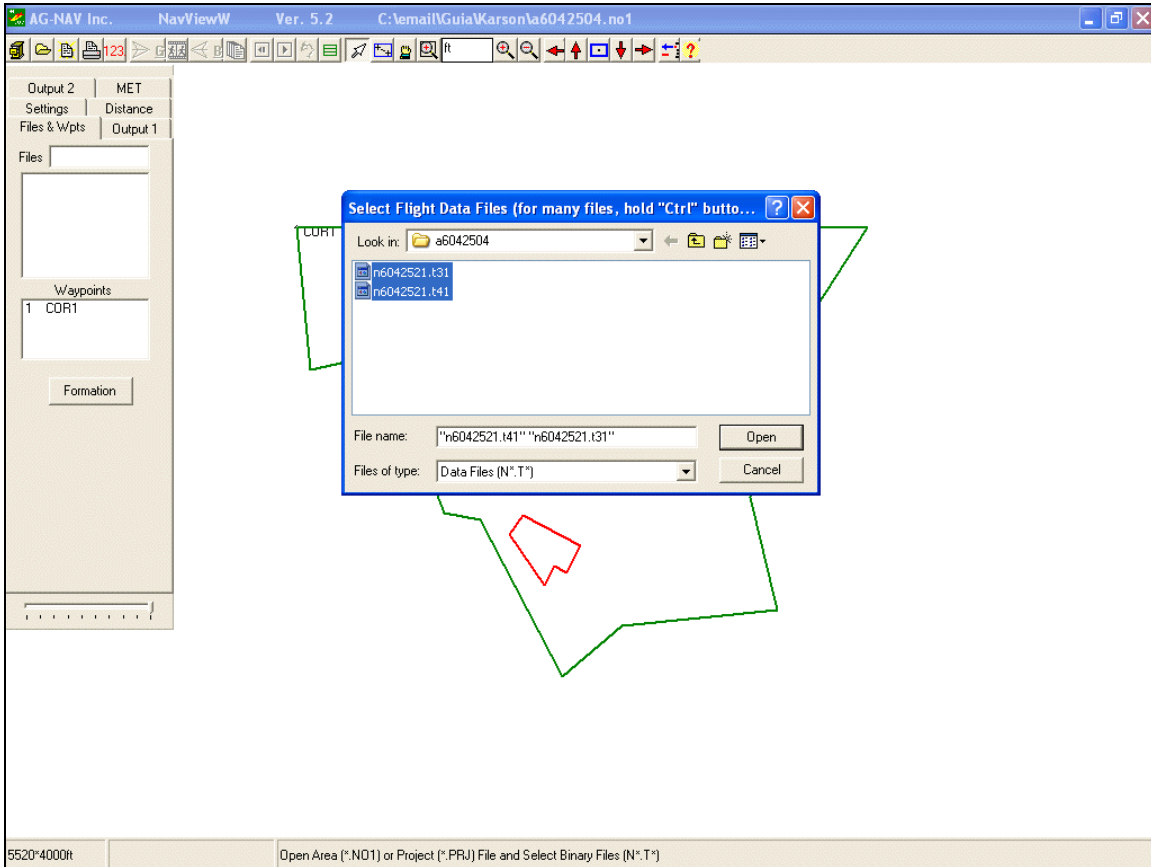


Figure 2: Select Flight Data Files

- 3) **Replay Data:** You can replay the data to make sure the spray data is OK. Click the button “G→” to replay data.

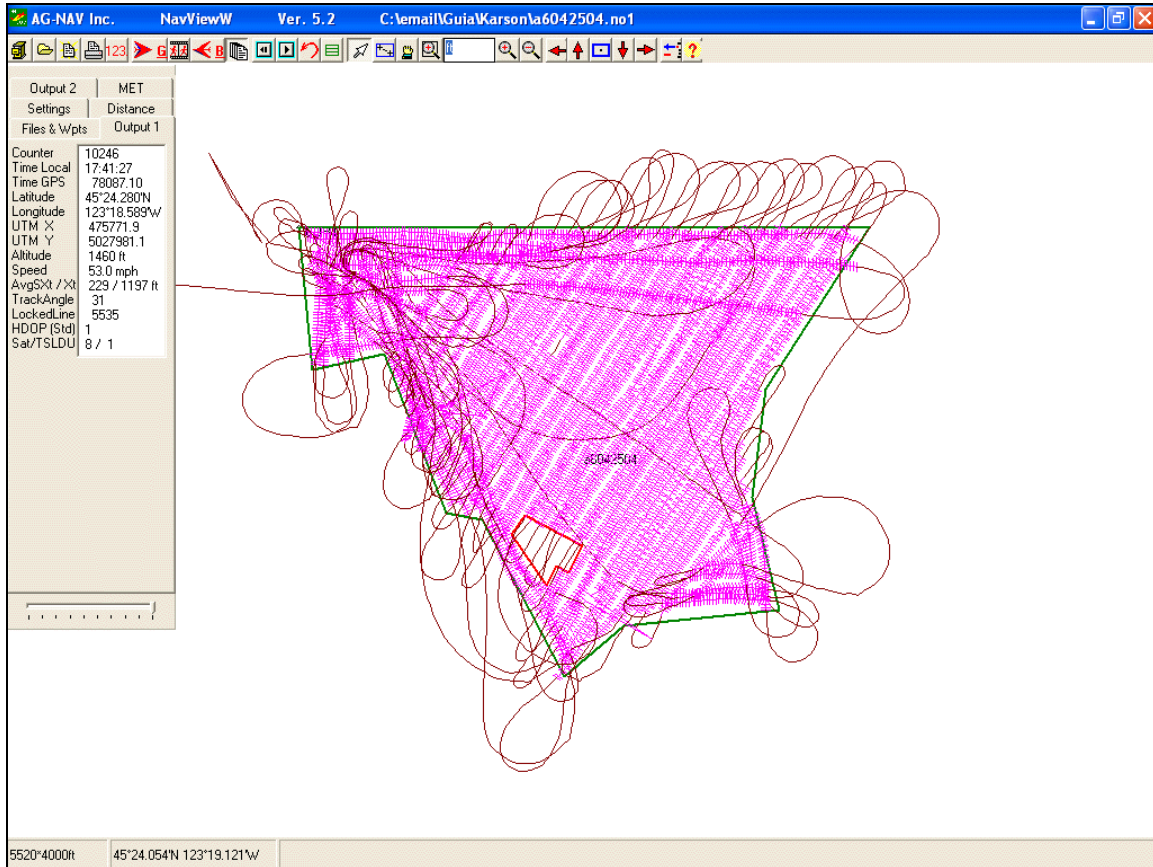


Figure 3: Replay Spray Data

- 4) If the data is good, click the first button on the Tool bar “Open Menu” to open the utility menu. Select “Edit Pilot Information”.

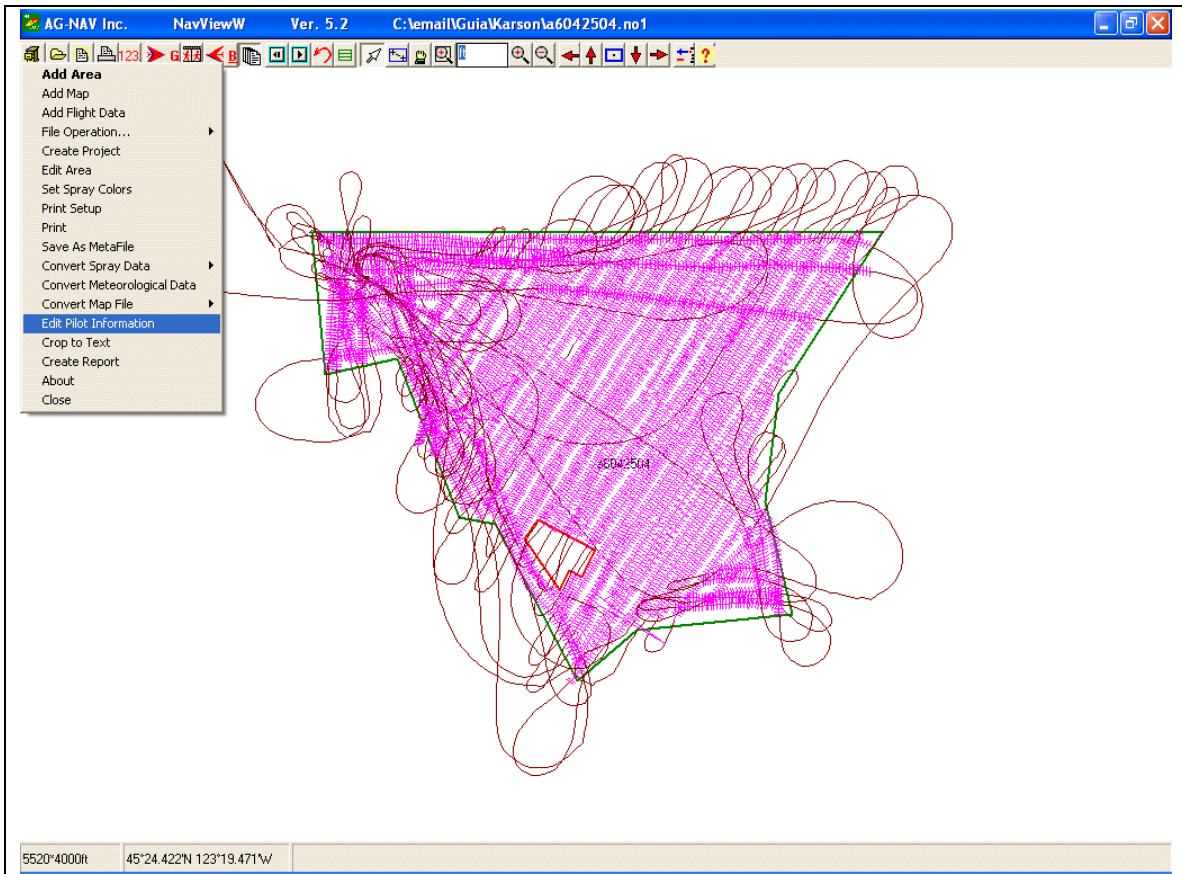


Figure 4: Select “Edit Pilot Information”

- 5) Edit Pilot Information: The Pilot Information will be copied to the report. You can write 10 lines of information. Each line has maximum 30 characters. When done, click "Accept" to save the information. If the same information is used for all reports, you don't have to edit the information for each report.

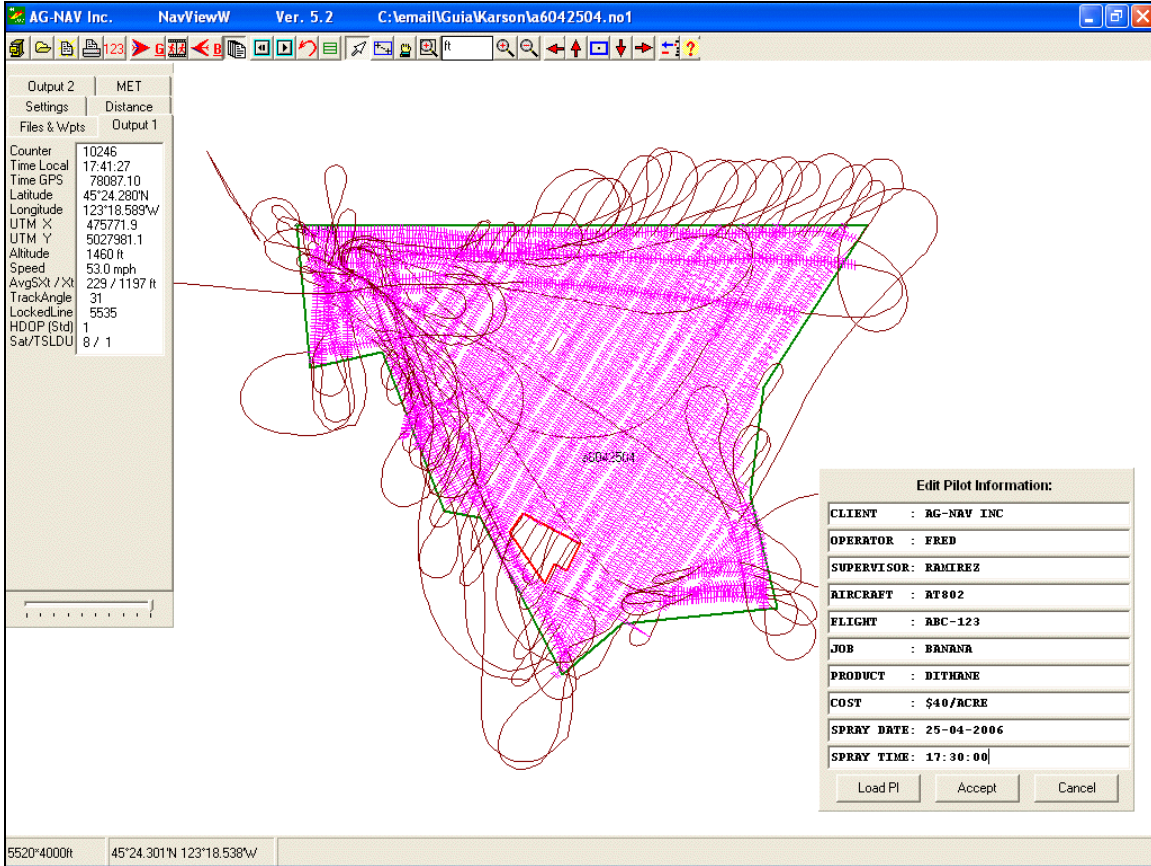


Figure 5: Edit Information

- 6) Click the first button “Open Menu” on the Tool bar to open the utility menu.
Select “Create Report”.

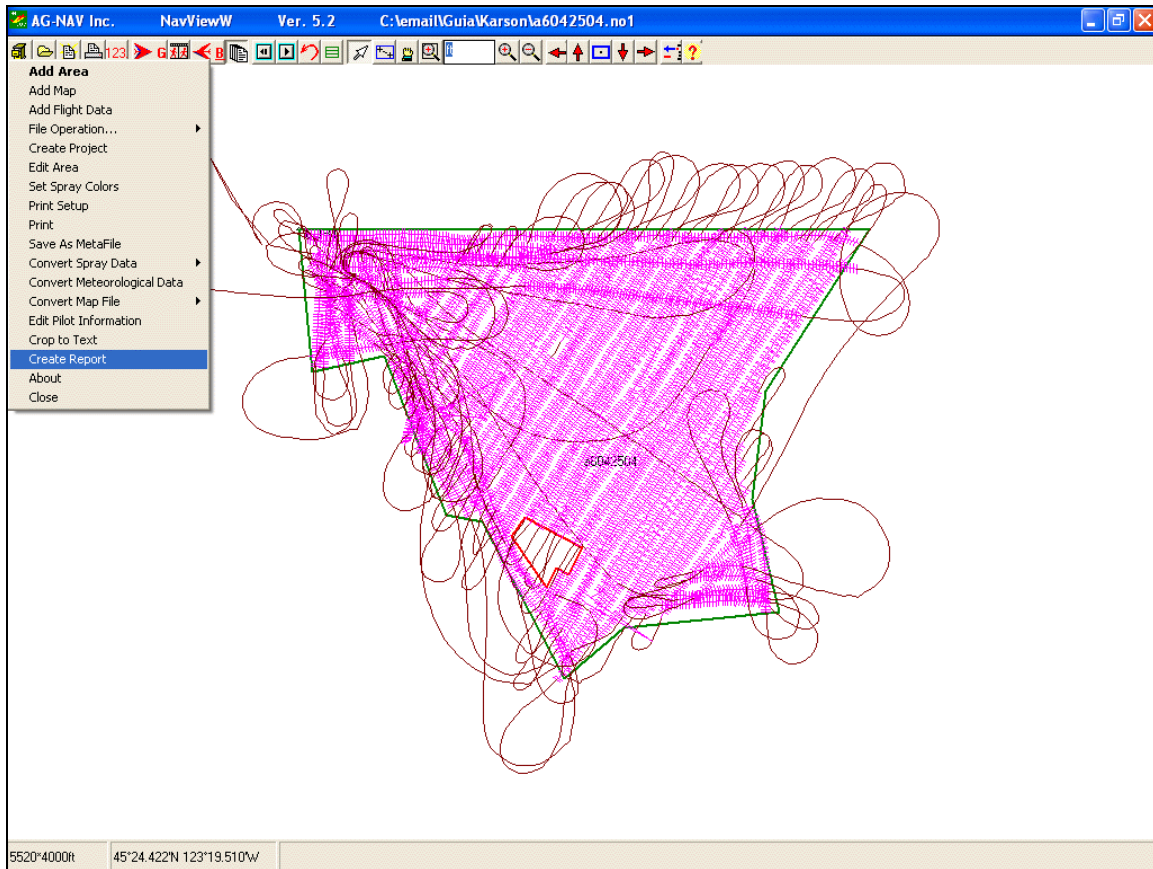


Figure 6: Select “Create Report”

- 7) Save Report: The report is saved in a text file. NavviewW prompts you to enter a filename for the report. The default name is the area or project name. You can change the name if desired. The extension should be “.TXT”.

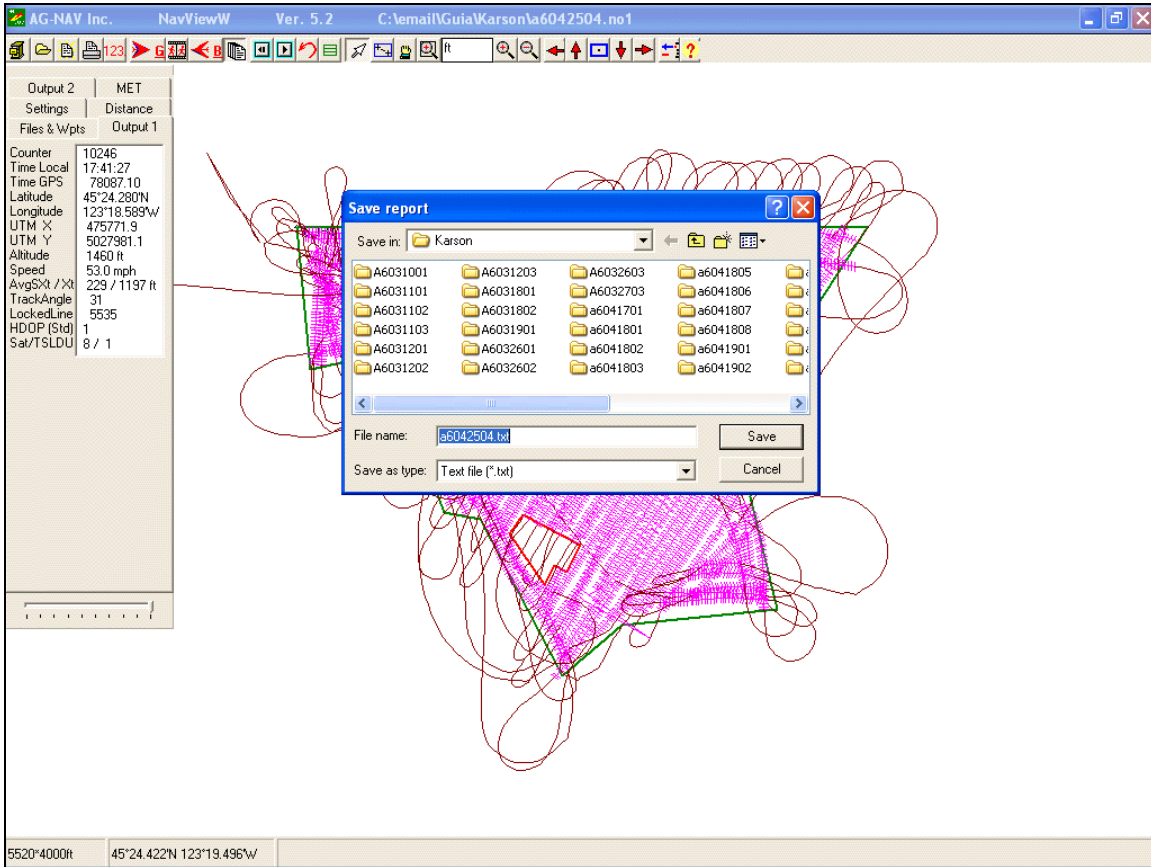


Figure 7: Enter Report Filename

- 8) View Report: The report is normally saved in the directory you have the area or project files. You can open the report with NotePad or import it into MsWord document. The data is shown for each line sprayed and the summary of all lines sprayed in the same spray data file is written at the end of report.

FLIGHT DATA REPORT								
Spray Area: a6042504.N01		Report Date: 06 September 2006						
CLIENT	:	AG-NAV INC						
OPERATOR	:	FRED						
SUPERVISOR	:	RAMIREZ						
AIRCRAFT	:	AT802						
FLIGHT	:	ABC-123						
JOB	:	BANANA						
PRODUCT	:	DITHANE						
COST	:	\$40/ACRE						
SPRAY DATE	:	25-04-2006						
SPRAY TIME	:	8:30:00						

File Name: N6042508.T31								
Line #	Start Time	Flite (sec)	Length (m)	Speed (km/h)	Area (ha)	AppRate (lit/ha)	Error (+/-m)	Turn (sec)
AB	8:34:21.1	36.4	1,480.4	146.0	3.3	26.4	0.0	0.0
1	8:34:59.8	11.3	483.1	152.5	1.1	27.1	2.0	2.4
1	8:35:12.1	3.1	120.6	144.3	0.3	19.3	0.9	1.0
3	8:35:29.9	3.8	141.1	131.0	0.3	29.3	3.5	14.7
3	8:35:35.1	11.8	474.0	145.7	1.0	24.0	1.4	1.4
3	8:35:49.1	11.6	506.8	157.0	1.1	26.0	0.7	2.3
3	8:36:01.6	7.8	343.4	158.3	0.8	26.6	1.3	0.9
3	8:36:11.6	10.1	442.5	159.1	1.0	26.2	2.6	2.2
5	8:36:37.6	2.9	104.0	120.5	0.2	34.8	1.2	15.9
5	8:36:48.9	5.3	223.7	148.3	0.5	26.5	1.1	8.4
5	8:36:56.3	7.6	312.4	151.6	0.7	26.5	0.7	2.0
5	8:37:05.1	11.6	497.7	154.3	1.1	24.3	0.8	1.3
5	8:37:18.8	16.7	724.4	155.1	1.6	25.7	0.9	2.1
7	8:37:46.9	17.8	747.4	149.6	1.6	27.0	1.9	11.4
7	8:38:06.8	11.6	520.4	161.2	1.1	27.3	1.0	2.0
7	8:38:19.4	6.8	307.1	162.0	0.7	21.6	0.0	1.1
7	8:38:27.6	4.4	193.4	158.0	0.4	23.8	0.8	1.4
7	8:38:33.5	10.4	451.5	155.5	1.0	24.2	0.8	1.4
9	8:38:54.9	12.5	514.5	145.1	1.1	27.3	0.5	11.1
9	8:39:08.8	25.6	1,091.6	152.8	2.4	25.3	0.7	1.4
9	8:39:36.6	7.6	343.4	158.0	0.8	26.1	1.0	2.3
9	8:39:44.9	10.1	435.3	156.6	1.0	26.4	1.2	0.6

Figure 8: View Report