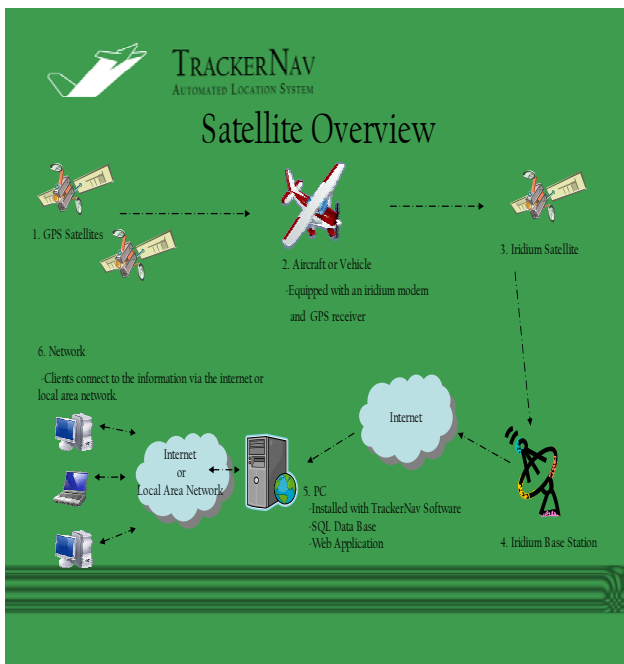


TrackerNav Automated Vehicle Location System (AVL) for Fleet Management



The *TrackerNav* system by AG-NAV Inc. is an advanced Automated Vehicle Location System (AVL) designed with fleet management in mind. Utilizing GPS technology and existing cellular networks provides for a robust, scalable system with no up-front telemetry costs.

TrackerNav consists of an on-board 12 channel GPS receiver coupled with a GSM/GPRS cellular modem. Combined with *TrackerNav* software on your PC, *TrackerNav* puts you in control of your data. Data is kept on your computer network. Other AVL systems store data off-site which can lead to costly monthly data hosting fees.



When deployed as part of a fleet management system, *TrackerNav* delivers accurate real-time information enabling route planners to compare where the carrier should be and where the carrier actually is.

*AG-NAV is a registered trademark of Ag-Nav Inc.

Better Data = Better Routes = Lower Costs

TrackerNav shows what the fleet actually did versus what the fleet was supposed to do. Coupled with planned routes, runs, and pickups, *TrackerNav* provides the answers to the following often unanswered questions:

- Why is a carrier often late?
- Where is the carrier now?
- Why does one carrier consume more fuel than others operating on similar routes?

Knowing where your vehicles are and what is happening in the field can reduce response times when there is an incident. Accidents, breakdowns, delays, and absent drivers can be dealt with faster when staff have an accurate picture of what is happening and are able to make adjustments in real-time. Real-time data results in fewer delays, better deployment of contingency resources and ultimately, better service to your customers.

MAIN FEATURES

- REAL-TIME LOCATION MAPPING
- REAL-TIME TRIP MAPPING
- PROGRAMMABLE SPEED AND EXCESSIVE IDLING ALARMS
- USER, DRAG AND DROP WAYPOINTS
- GEOCODING
- HISTORICAL TRIP REPORTING
- PREVENTATIVE MAINTENANCE REPORTING
- 12 CHANNEL GPS RECEIVER
- GSM/GPRS MODEM SEND DATA VIA SMS TEXT MESSAGING OR GPRS NETWORK CONNECTION
- LOCAL DATA STORAGE
- ROBUST SCALABLE NETWORK
- DATA VIEWING WORLDWIDE VIA INTERNET

TrackerNav Automated Vehicle Location System (AVL)

TECHNICAL SPECIFICATIONS

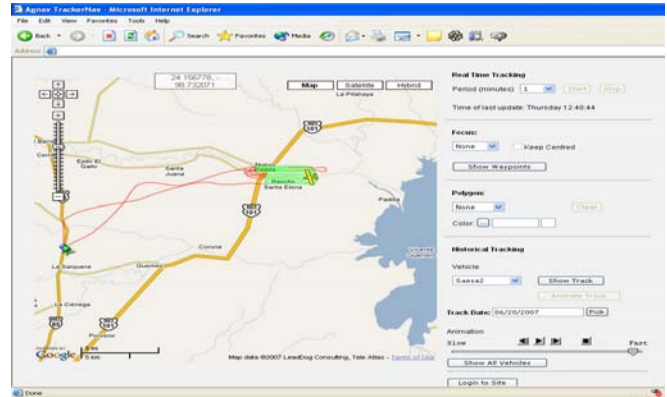
TrackerNav On-Board Hardware

Dimensions:	16.5cm x 9.5cm x 3.9 cm
Weight:	0.38 Kg
GPS Receiver:	12 Channel
GPS Antenna:	Active Stub or roof mount
Update Rate:	1 Hz
Accuracy:	1 – 15 meters (Average)
Datum:	WGS-84
Power Supply:	9-30V DC
Power Consumption:	80 mA @ 12V (standby mode) 20 mA @ 12V (sleep mode)
Operating Temp:	-25°C to 50°C (32°F to 120°F)
Storage Temp:	-40°C to 70°C (-5°F to 155°F)
Built In Memory:	2 MB Flash Memory
Input Ports:	2 digital inputs (positive triggered) 6 digital inputs (negative triggered) 2 analog inputs (0 – 30 V DC)
Output Ports:	3 digital outputs (positive trigger, max 300 mA, 12 V DC) 4 digital outputs (negative trigger, max 300 mA, 12 V DC) 1 digital output (negative trigger, max 10 A 12 V DC)
Serial Ports:	1 – DB9 male connector, RS-232 (configurable parameters) 1 – RJ-59 Connector (configurable parameters)

SOFTWARE

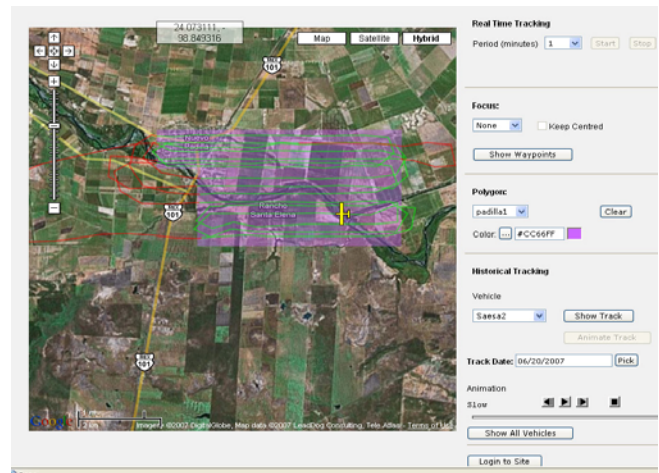
- TrackerNav data collection program
- Robust SQL data base
- HTML based reporting, clients need only a web browser
- Customizable carrier profiles
- Customizable preventative maintenance items
- Customizable per carrier preventative maintenance profiles
- Customizable per carrier limits (speed and maximum idle)
- Trip reporting and printing
- Flexible licensing options

Notes:



MAP VIEW AG AIRCRAFT SPRAY PATTERN

Historical Track displaying start point, end point and waypoints.



HYBRID VIEW AG AIRCRAFT SPRAY PATTERN OVER USER LOADED SHAPE FILE