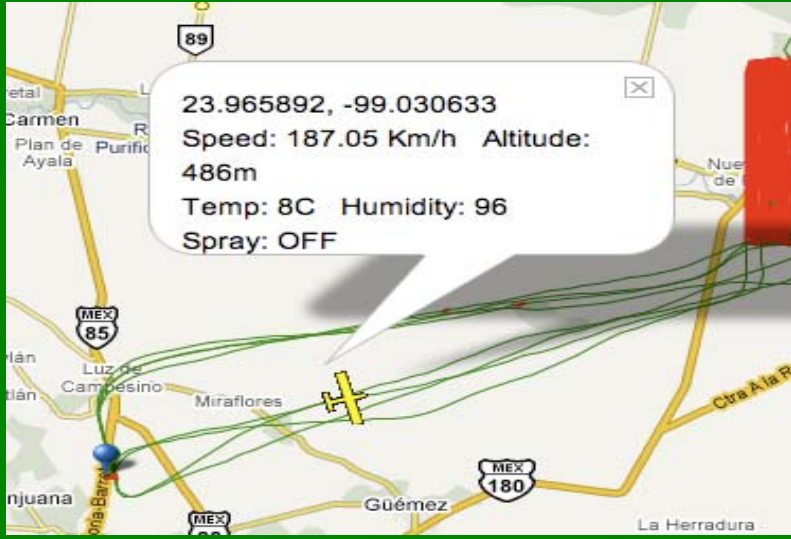




TRACKERNAV



Fast and Secured
View Applications and Aircraft Positions
at anytime and anywhere

Features

Real Time Tracking

View your aircraft position in near real time on a map or satellite image.

Historical Tracking

View applications on any selected day.
Animate flight path.
Customize data to meet contract requirements.

Simple and Easy

Just turn on TrackerNav feature in Guia, you're ready to track data.

Mission Reporting

Save and print flight report directly from internet.

Secured Database

Privacy and Confidential.
Build your own server (optional)

And more ...

SOS or Emergency Alert.
Display spray areas in KML/KMZ/NOI file on map.
Display STOP and SOS points.
Affordable cost by adjusting time.

The *TrackerNav System* by AG-NAV Inc. is an advanced Automated Aircraft and Application Tracking System. Utilizing GPS technology, satellite and existing cellular networks provides for a robust, scalable system with no up front telemetry costs.

TrackerNav consists of an onboard aircraft modem for satellite or GSM/GPRS cellular communications connecting to your Guia. Flight data are saved in a data server. Depending on your choice, the data server can be owned and managed by you or AG-NAV.

When deployed as part of a flight management system, TrackerNav delivers accurate near real time information enabling mission managers and inspectors to know where the aircraft is and where the application has been made.

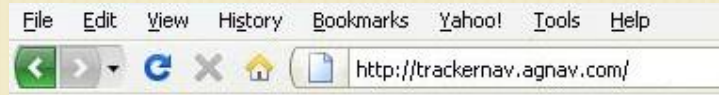
At anytime and anywhere via internet, TrackerNav can show and replay on a map or satellite image a mission from take-off to landing.

Data to be viewed can be customized to meet your contract or application requirements.

TrackerNav Demo in 3 Steps

• STEP 1

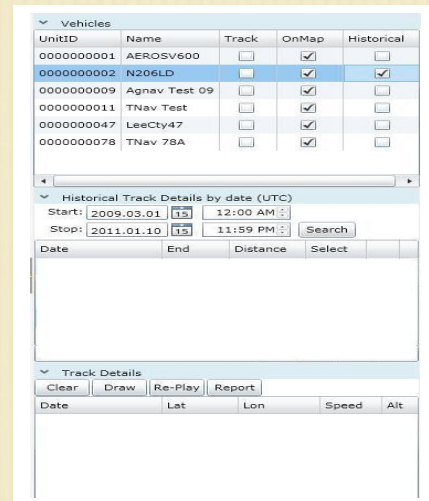
Connect to website : <http://trackernav.agnav.com/>



Enter Username : **agnav** Password: **agnav** Click <OK >

• STEP 2

Under Vehicles → Historical column , select **N206LD**
 Under Historical Track Details by Date,
 click **Start Calendar** then select **May 01, 2009**
 For Stop, keep today's date
 Click **Search**



• STEP 3

When Search is done, select any Track.
 Under Track Details, click **Draw**
 Click the **Zoom +** button to view the flight path more closely
 You can change the map to **Aerial** to view flight data on a satellite image.

